

2450
CRYSTAL



2461
S CLARK

AN OFFICE EXPERIENCE THAT TOTALLY HITS THE MARK

2450 Crystal Drive / 2461 S. Clark Street
Arlington, VA 22202

Gary Cook

GCook@lpc.com
703.284.3379

Stoddie Nibley

SNibley@lpc.com
703.284.5884

Neil Alt

NAlt@lpc.com
703.284.5868

DELIVERING Q1 2023

CRYSTALANDCLARK.COM



MRP | REALTY

LINCOLN
PROPERTY
COMPANY

2450
CRYSTAL



2461
S CLARK

Introducing 2450 Crystal and 2461 S. Clark.

Fully connected, and at the absolute center of National Landing, are two completely renovated office buildings that provide access, proximity, and convenience to every workday. Modern, dynamic spaces. Inspiring amenities. And an outdoor plaza full of must haves. **Experience it all at the center of it all.**

EXPERIENCE IT ALL
AT THE CENTER OF IT ALL

UPSCALE FEATURES & AMENITIES

- Impressive new plaza entrance and 2nd-floor outdoor courtyard with open-air conference tables and seating
- Street-level retail, dining, and lifestyle services
- Fresh, biophilic design—bringing outdoor elements inside
- New club-quality fitness center with locker rooms and towel service
- Renovated meeting rooms, plus new 200+ person conference center
- Secure indoor bicycle storage

A SOUGHT-AFTER CENTRAL LOCATION

- Convenient Metro access and proximity to Reagan National Airport
- Central to Amazon HQ2 and Virginia Tech innovation campus
- 5-minute walk to National Landing attractions in the north end
- Quickly connect with downtown DC govt agencies, plus The Pentagon





2450

CRYSTAL

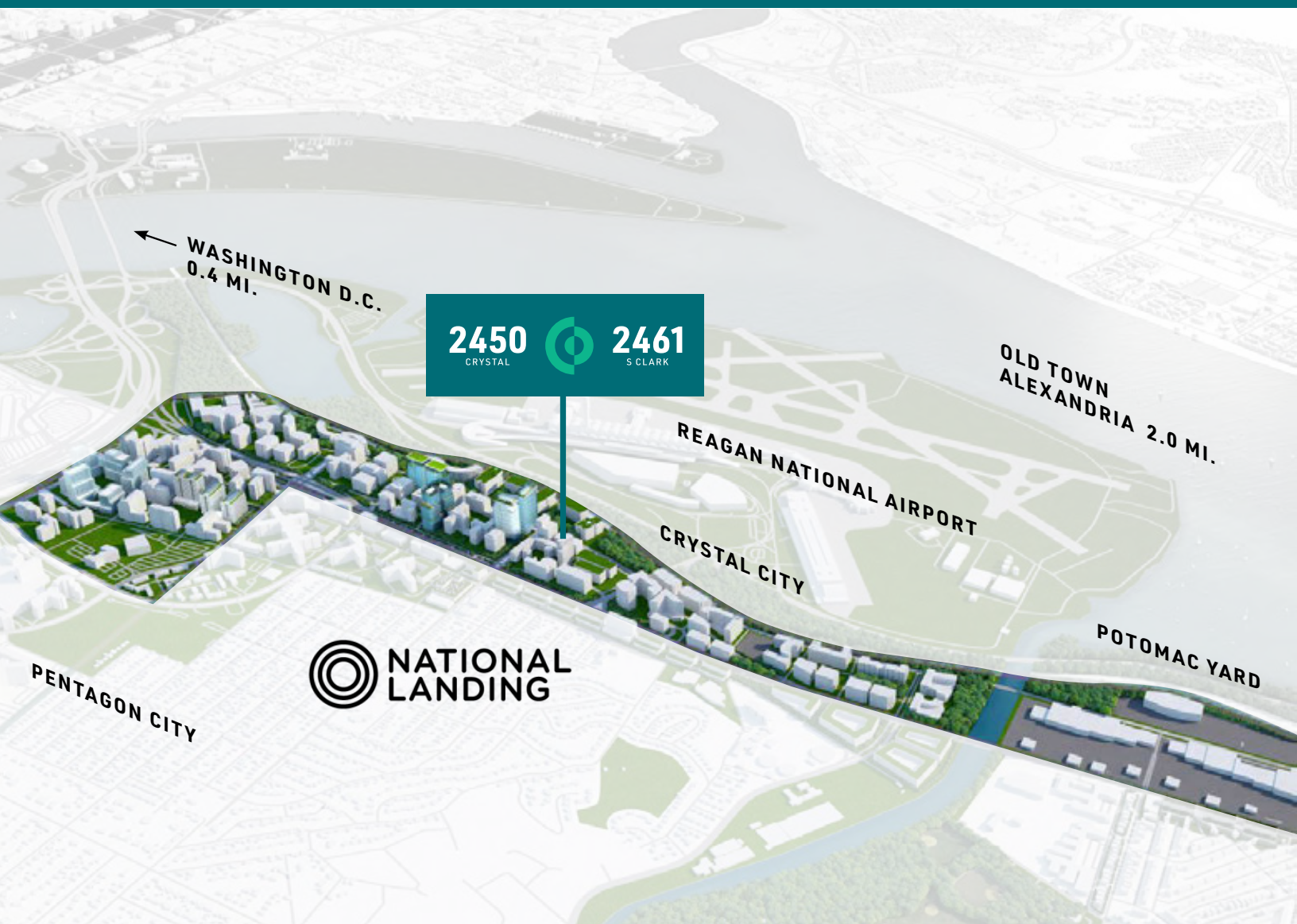


AVAILABILITIES	SF	DATE AVAILABLE
2nd Floor	42,872 SF	Immediately
3rd Floor	27,023 SF	Immediately
4th Floor	27,023 SF	Immediately
5th Floor	27,023 SF	Immediately
7th Floor	27,023 SF	Immediately
8th Floor	27,023 SF	Immediately
Suite 920	3,683 SF	Immediately
Suite 940	5,266 SF	Immediately
Suite 960	6,607 SF	Immediately
10th Floor	16,592 SF	Immediately

2450
CRYSTAL



2461
S CLARK



FULLY AMENITIZED



2450

CRYSTAL





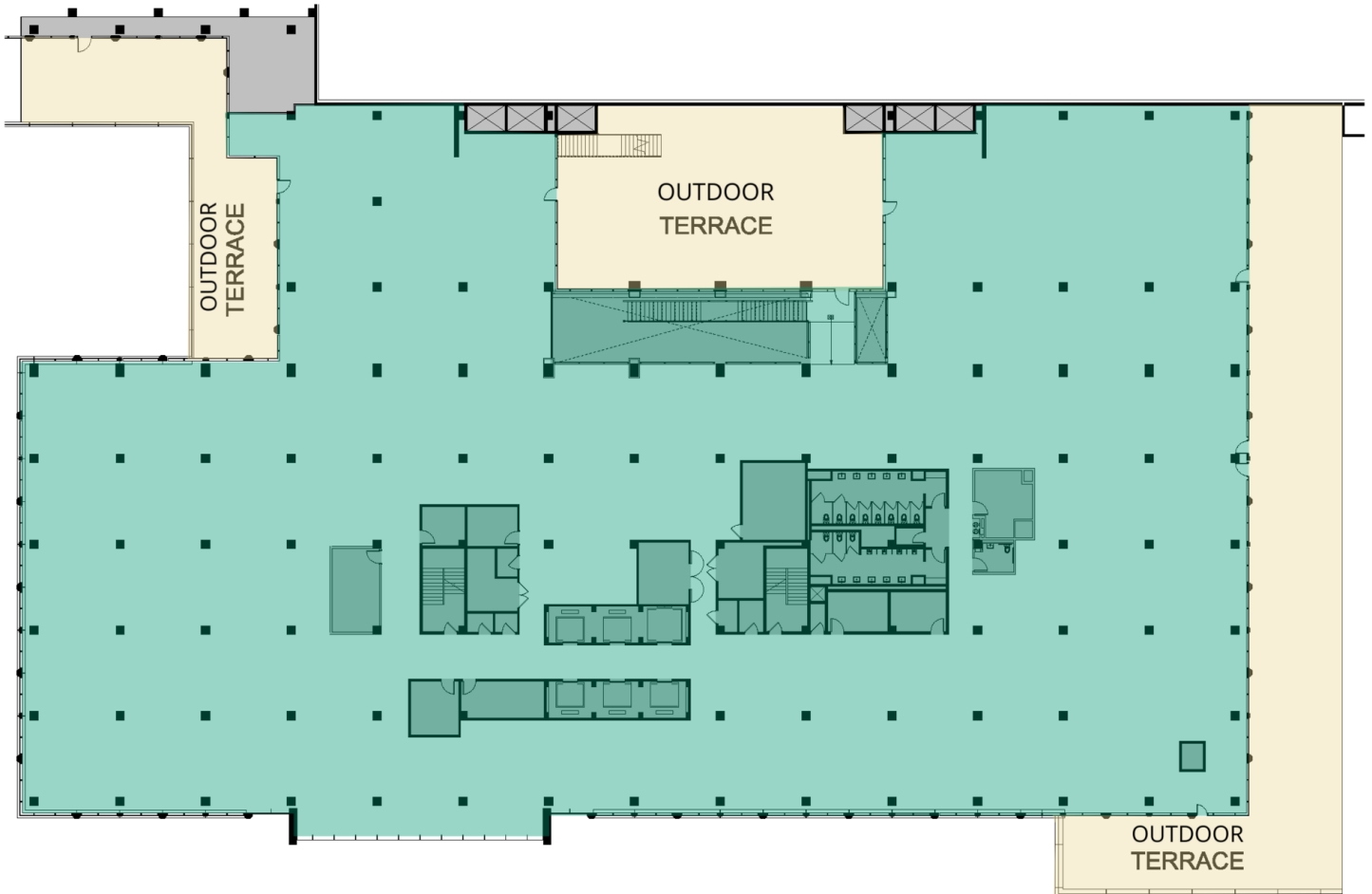
2450
CRYSTAL





2450

CRYSTAL

**SUITE****SIZE****DESCRIPTION**

2nd Floor

42,872 SF

Available Immediately



2450
CRYSTAL



SUITE

SIZE

DESCRIPTION

3rd Floor

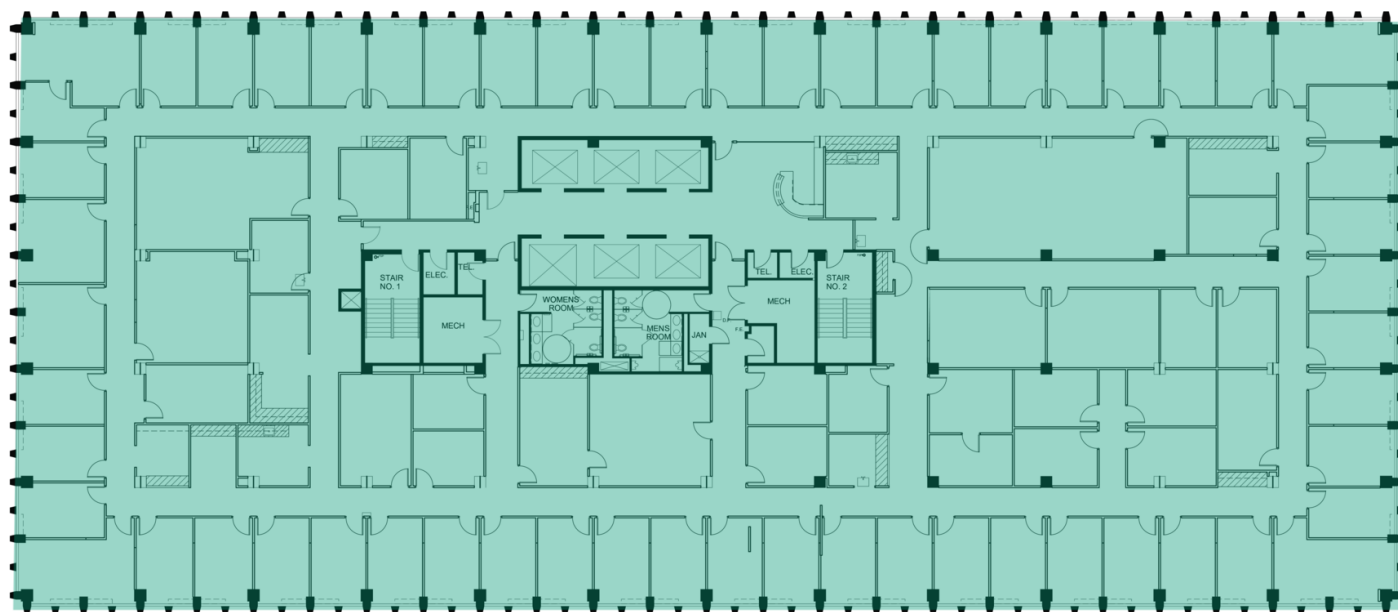
27,023 SF

Available Immediately



2450

CRYSTAL

**SUITE****SIZE****DESCRIPTION**

4th Floor

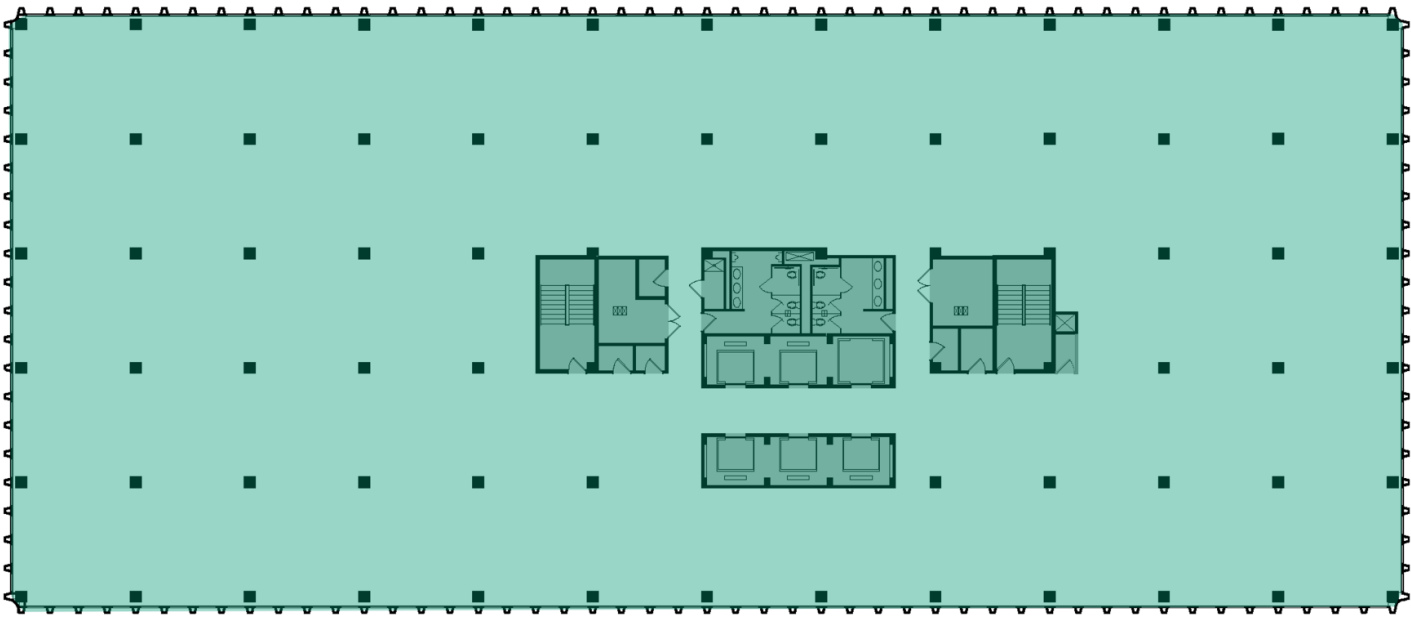
27,023 SF

Available Immediately



2450

CRYSTAL

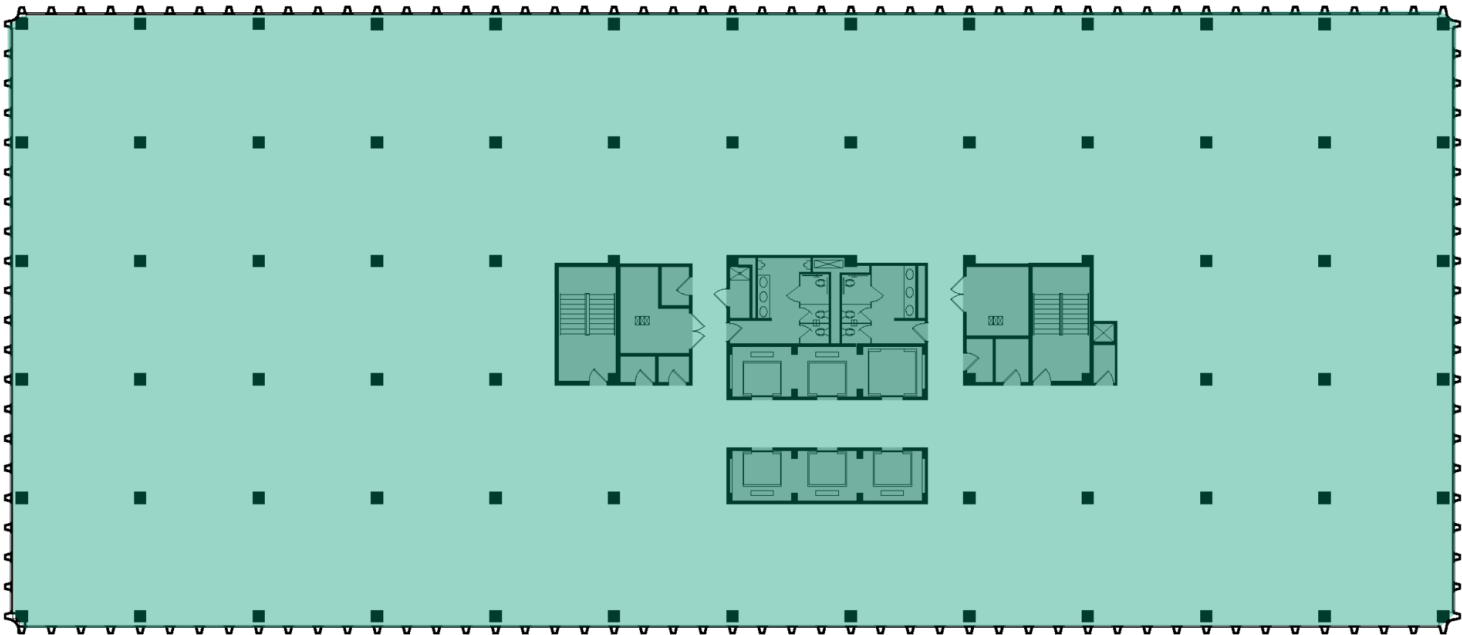


SUITE	SIZE	DESCRIPTION
5th Floor	27,023 SF	Available Immediately



2450

CRYSTAL



SUITE

SIZE

DESCRIPTION

7th Floor

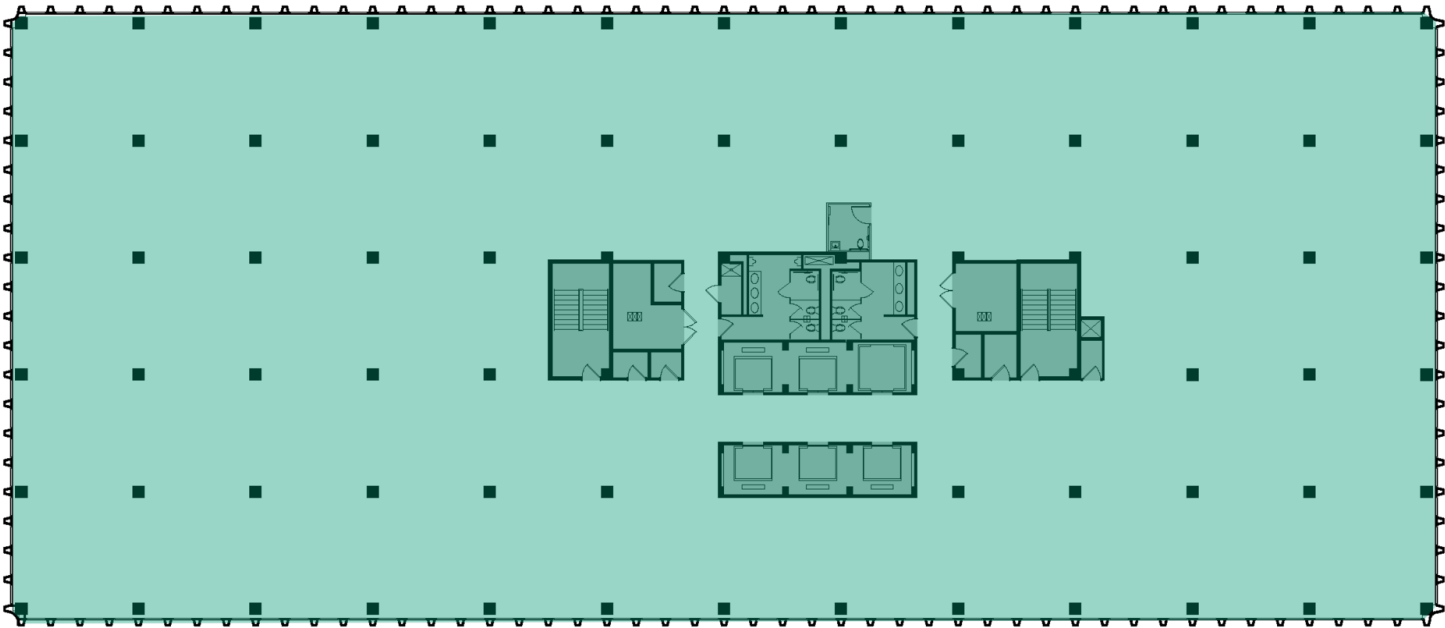
27,023 SF

Available Immediately



2450

CRYSTAL



SUITE

SIZE

DESCRIPTION

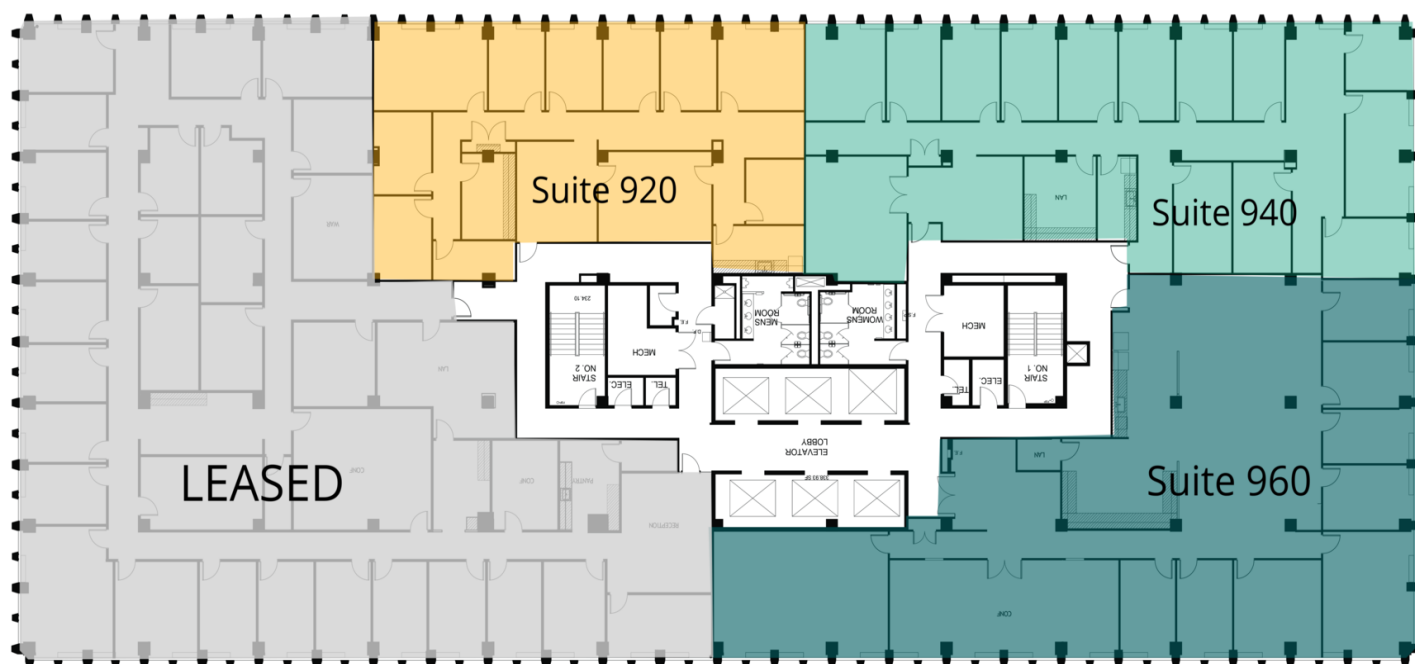
8th Floor

27,023 SF

Available Immediately



2450
CRYSTAL



SUITE	SIZE	DESCRIPTION
Suite 920	3,683 SF	Available Immediately
Suite 940	5,266 SF	Available Immediately
Suite 960	6,607 SF	Available Immediately



2450

CRYSTAL

**SUITE****SIZE****DESCRIPTION**

10th Floor

16,592 SF

Available Immediately

2450
CRYSTAL



2461
S CLARK

2450 Crystal Drive / 2461 S. Clark Street
Arlington, VA 22202

For Leasing Information Contact:

Gary Cook

GCook@lpc.com

703.284.3379

Stoddie Nibley

SNibley@lpc.com

703.284.5884

Neil Alt

NAlt@lpc.com

703.284.5868

DELIVERING Q1 2023
CRYSTALANDCLARK.COM



MRP | REALTY

LINCOLN
PROPERTY
COMPANY